



# GRANULAR

Newsletter 8 - September 2025

## Rural Proofing in Action - See you at EU Regions Week!

GRANULAR, together with the VALORADA and RUSTIK projects, will be part of the European Week of the Regions and Cities 2025, contributing to the session 'Rural Proofing: Making policies work for rural areas through data/Earth observation'.

This interactive session will explore how rural proofing can be effectively integrated into policymaking and decision-making, helping unlock the full potential to all territories and supporting people's right to live and thrive in rural areas-aligned with the European Commission's Vision on Agriculture and Food.

23<sup>rd</sup> EUROPEAN WEEK of  
REGIONS and CITIES

Shaping Tomorrow, Together

13-15 OCT 2025

## Rural proofing: Making policies work for rural areas through data/Earth observation

14 October at 16:00 CET



valorada



#EURegionsWeek



LEARN MORE!

## GRANULAR NEWS

## VIBRANT RURAL AREAS: TOOLS AND POLICIES FOR RESILIENT AND COMPETITIVE ECONOMIES



## Empowering Rural Communities: Strategies for Inclusive and Competitive Economies

On 16th May, experts, policymakers, and researchers gathered virtually for a dynamic session under the GRANULAR project, discussing how innovative tools, data, and policy frameworks can boost economic resilience and competitiveness in Europe's rural areas. The webinar, titled "Vibrant Rural Areas: Tools and Policies for Resilient and Competitive Economies", featured insights from key European research and policy institutions including Nordregio, the European Commission's Joint Research Centre (JRC), and the University of Vigo representing the SERIGO project.

[Read the highlights report!](#)

## Unlocking rural potential: GRANULAR partners present tools for rural resilience at ERSa 2025

Earlier this summer, the heart of European rural innovation beat strongly at the 64th European Regional Science Association (ERSA) Congress in Athens. GRANULAR partners hosted a special session on "Taking into Account Diversity to Shape just Rural Futures: Novel Indicators for Resilient and Inclusive Development", bringing together experts to share essential frameworks and findings designed to navigate the complexity and multiplicity of modern rural challenges.

[Check it out!](#)



## GRANULAR Partners Convene in Galicia for Productive General Assembly and Cross-Visit

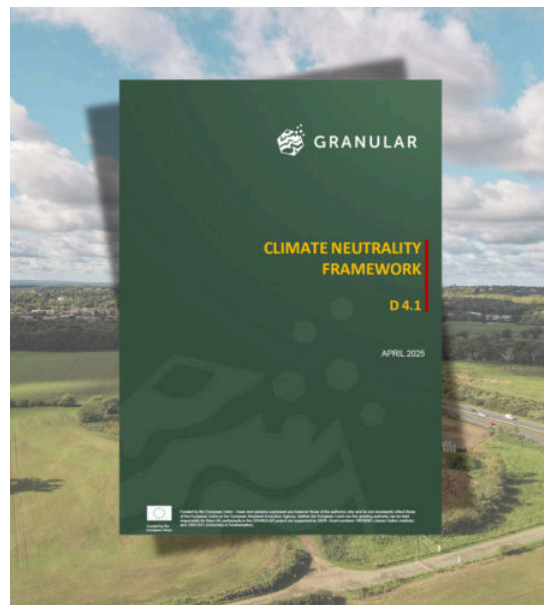
At the end of May, the GRANULAR project successfully concluded its General Assembly and an international cross-visit in Ourense, Galicia (Spain). Hosted by the Spanish Living Lab in Ourense from the University of Vigo from May 27th to 29th, the three-day event brought together project partners to review significant progress, foster collaboration, and gain firsthand insights into rural well-being challenges and innovations in the region. The event reaffirmed the project's core objective: enhancing rural well-being through novel data, indicators, and methods.

[Find out more!](#)

## Measuring Climate Neutrality in Rural Areas: A New Framework from GRANULAR

As Europe advances towards its climate neutrality goals, rural areas play a crucial role in this transformation. However, most existing tools for monitoring climate neutrality are primarily designed for urban contexts, often overlooking the unique environmental, social, and economic realities of rural regions. From the intricacies of small-scale farming to the challenges of limited public transport, rural areas face distinct challenges – and opportunities – that require tailored approaches.

[Check it out!](#)



## Rural resilience through a gender lens: What labour data and Regional Economic Dynamics in the EU reveals

The GRANULAR report on “Rural resilience from a gender perspective”, produced by partners from Nordregio, examines how gender and rurality interact to shape employment outcomes across Europe. Using microdata from the European Labour Force Survey (EU-LFS) spanning 2013, 2018 and 2023, the report explores how labour market participation, part-time employment, and care responsibilities vary between women and men in urban and rural areas, and how these patterns differ across welfare regimes.

[Find out more!](#)

## LIVING & REPLICATION LABS IN FOCUS



## Living Labs in Action: Collaborative governance for Transformation

On October 9, 2025, the RUSTIK, GRANULAR, and Down to Earth projects will come together in Galicia, Spain, for a collaborative workshop on multi-actor approaches to rural sustainability. This Living Lab-style event will gather local stakeholders, researchers, and policymakers to co-design strategies addressing pressing rural challenges such as depopulation, land management, and climate resilience. By combining data-driven insights with on-the-ground perspectives, the workshop will showcase how participatory methods can help shape more inclusive and adaptable rural transitions across Europe.

[Register now!](#)



## GRANULAR Latvian Lab showcased at the Rural Pact Conference

More than 250 participants from across Europe gathered at the Rural Pact Conference for two days of dynamic exchange and debate on the future of rural policies. Among the highlights, GRANULAR partners from PREPARE presented the project, showcasing how community-led innovation is shaping sustainable rural development in their Replication Lab.

[Read more!](#)

## Testing the GRANULAR Rural Proofing: What Living Labs Taught Us

Can rural proofing really help policymakers design better, fairer policies for rural areas? That's what eight Multi-Actor Labs across Europe set out to explore as part of the GRANULAR project. From Finland to Greece, and from Scotland to Italy, these Multi Actor Labs applied GRANULAR' rural proofing framework to real policies and initiatives. The goal? To assess their impacts across different types of rural areas and gather concrete insights for better rural policymaking.

[Check it out!](#)



## EUROPEAN NEWS

---



### The next EU budget: what's at stake for rural areas

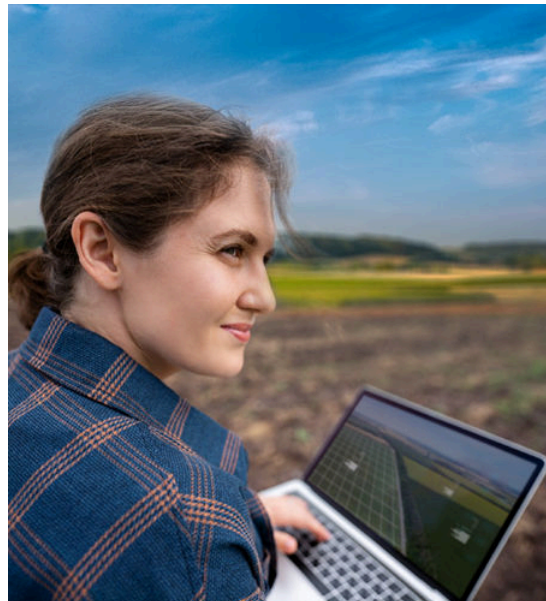
Last July the European Commission presented its proposal for the next €2 trillion Multiannual Financial Framework (MFF) covering 2028–2034. President Ursula von der Leyen described it as a budget designed to meet Europe's strategic ambitions in a time defined by geopolitical shifts, climate action, and economic challenges. But what does this new budget mean for the future of rural areas and rural development? The new plan aims for drastic simplification, reducing the number of funding instruments from over fifty to approximately twelve. This effort includes creating a single rulebook with other funding programmes to reduce red tape and simplify access to funding for beneficiaries.

[Read more!](#)

### The next chapter for the CAP

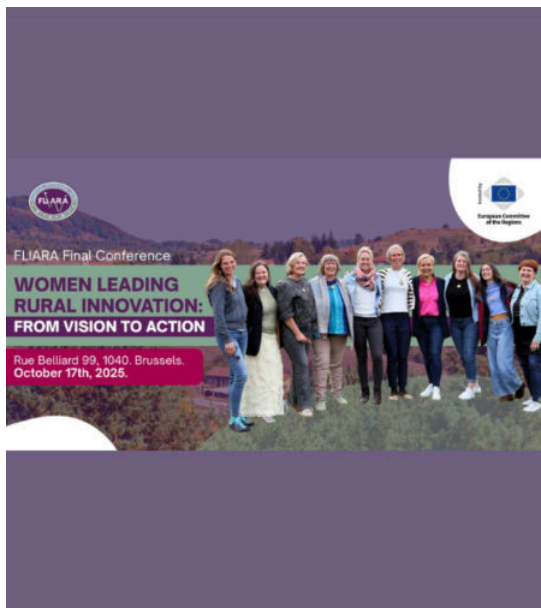
In July, the European Commission published its proposal for a simpler, more targeted and future-oriented Common Agricultural Policy (CAP) for the period after 2027. The CAP after 2027 will keep its toolbox intact, offering stability and predictability. A ring-fenced budget of at least €300 billion for income support and crisis support will ensure that support to EU farmers is maintained at the same level than the current CAP. Income support under the new CAP is defined more broadly than before. It now includes all payments that support the income or business case of a farmer, including area-based income support, agro-environmental actions and on-farm investments such as farm modernisation, diversification or the uptake of new practices and technologies.

[Check it out!](#)



## OTHER PROJECTS

---



## Women Leading Rural Innovation: From Vision to Action

The Final Conference of the FLIARA Project will bring together researchers, policymakers, innovation support actors, and civil society stakeholders to spotlight the critical role of women in shaping the future of rural areas and sustainable farming. Taking place during Rural Women's Week, the conference will serve as a forum to reflect on the role of women in shaping sustainable futures in farming and rural areas.

[Register now!](#)



## FUTURAL results on policy mapping of rural community-led innovations

The FUTURAL project has published key findings from its review of approximately 100 policy and governance frameworks shaping community-led innovation in rural areas. Conducted by the European Association for Innovation in Local Development (AEIDL), the analysis highlights existing policies, identifies gaps, and offers recommendations for future policy development.

[Read more!](#)



## RURACTIVE Welcomes Nine Additional Dynamos to Further Replicate Its Community-led Innovation Process

Alongside the already established twelve RURACTIVE case study areas (known as Dynamos), RURACTIVE has officially selected nine Additional Dynamos to join its core network. They will gain the knowledge, skills and



## SERIGO: Empowering Young People in Rural Slovenia

The SERIGO project is supporting the social inclusion of young people in Poljčane, a rural municipality in Slovenia, by developing and testing socially innovative models and tools. Poljčane faces persistent challenges: poverty risk, an ageing population, youth unemployment, and limited social and care services, further constrained by its protected natural areas. These issues particularly affect young people, leading to

development practices needed to establish local multi-actor Rural Innovation Ecosystems. The selection follows a call to express interest that attracted 62 applicants from around the world, highlighting the strong enthusiasm for advancing rural innovation through the project's collaborative model in a vast range of rural topics.

social exclusion and limited opportunities. Many youth leave Poljčane because they lack spaces and opportunities to realise their ideas and potential. The **SERIGO pilot in Poljčane** focuses on bridging community divides and fostering intergenerational collaboration.

[Check it out!](#)

[Read more!](#)

## EVENTS

### [EU CAP Network Seminar: Delivering the CAP today and beyond](#)

**7 October 2025**

Brussels, Belgium

### [CODECS Bootcamp](#)

**8 October 2025**

Online

### [Agriculture and Biodiversity science-based policy development in Europe](#)

**10 October 2025**

Online

### [Regions to stay – digital innovations for local development](#)

**14 October 2025**

Jacques Delors building, JDE 52 (Brussels. Belgium)

### [Tools4CAP Academy Module VI – Integrated data and digital tools: user story approach to implement Common Agricultural Policy](#)

**5 November 2025**

Online



Funded by  
the European Union



UK Research  
and Innovation

Funded by the European Union. Views and opinions expressed are however those of the author(s) only and do not necessarily reflect those of the European Union or the European Research Executive Agency. Neither the European Union nor the granting authority can be held responsible for them. UK participants in the GRANULAR project are supported by UKRI- Grant numbers 10039965 (James Hutton Institute) and 10041831 (University of Southampton).

Copyright © 2023 GRANULAR | All rights reserved.

Our mailing address is:  
[aeidl@ruralgranular.eu](mailto:aeidl@ruralgranular.eu)

You are receiving this newsletter because you have subscribed to our mailing list or have participated in one of the GRANULAR events. Want to change how you receive these emails?

[Unsubscribe](#)

