



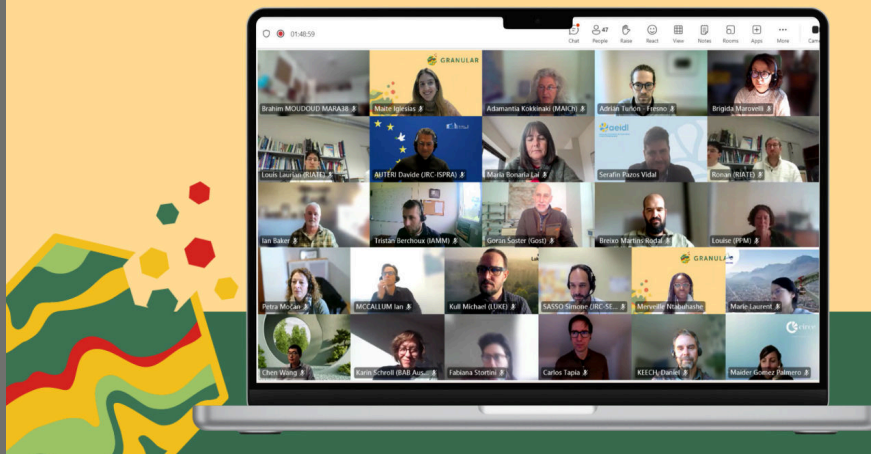
GRANULAR

Newsletter 6 - December 2024

Granular Rural Data: A Key to Understanding and Supporting Rural Communities

On 5 December, 75 actors convened to GRANULAR webinar to discuss the critical role of data in understanding and supporting rural communities. Organised by the European Association for Innovation in Local Development (AEIDL) as part of GRANULAR Knowledge Transfer Accelerator, the webinar highlighted the need for granular data that accurately reflects the diversity of rural areas, as well as the importance of collaboration and knowledge sharing for evidence-based policymaking.

**DATA FOR RURAL AREAS:
TOWARDS SMARTER RURAL POLICIES**



[FIND OUT MORE!](#)

[READ THE REPORT!](#)

GRANULAR NEWS



GRANULAR General Assembly highlights progress for rural communities

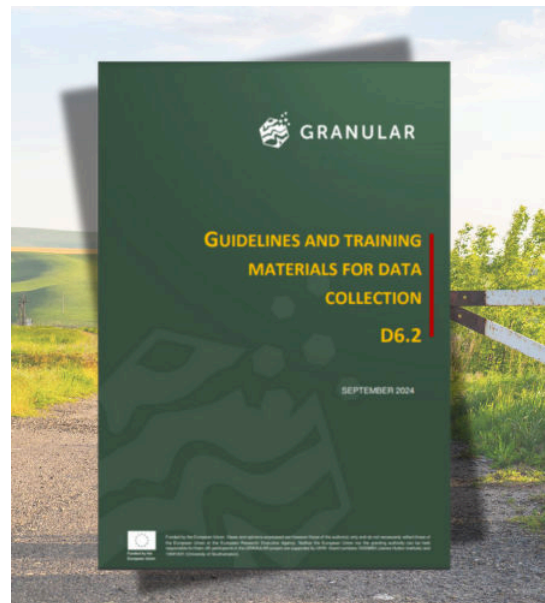
On 19 November 2024, the GRANULAR General Assembly convened online to assess progress and set priorities for advancing data-driven solutions to support rural areas across Europe. The event gathered project partners and stakeholders to review key achievements, address challenges, and outline the next steps in shaping policies and tools tailored to rural needs.

[Read more!](#)

Empowering rural policy with data: New guidelines from GRANULAR

The GRANULAR project recently released new guidelines and training materials for data collection. Developed in collaboration with inputs from the project's seven Living Labs, the report offers practical steps for local practitioners to generate evidence for decision-making processes, from the identification of priorities to data analysis and interpretation.

[Check it out!](#)



Rural Proofing in cross-border areas: the case of Ourense and Portugal

On 29 November the INTERREG Project from the Gerês-Xurés cross-border programme between Ourense in Galicia (Spain) and Northern Portugal met to finalise the analysis of this cross-border area, in view of setting up a European Grouping for Territorial Cooperation (EGTC) to address cross border obstacles between the 20 Galician and Portuguese municipalities that are part of the Gerês-Xurés mountain protected area. For background this is part of one of the largest and longstanding INTERREG Programmes in Europe.

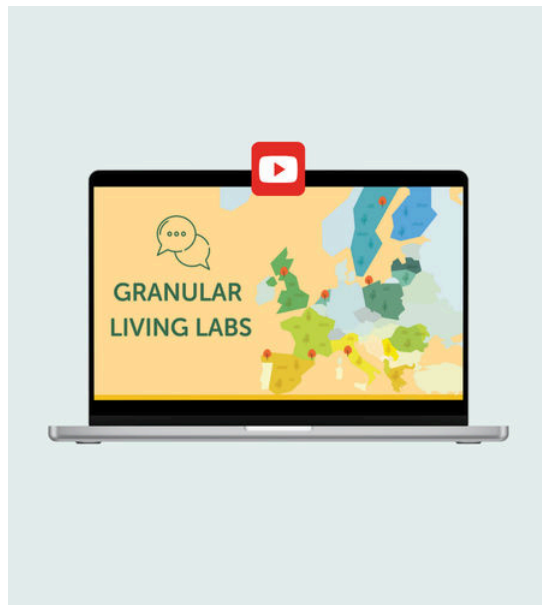
[Read more!](#)

LIVING LABS IN FOCUS

Explore the interviews from our Living Labs!

GRANULAR's Living Lab facilitators have been interviewed to provide insights into each lab: what they do, their key objectives and goals, as well as the challenges they have faced so far. Living Labs bring together actors from science, policy, and civil society to co-design, test, and validate GRANULAR's work. This collaboration bridges scientific disciplines (from agricultural engineers to social scientists) with non-academic actors such as practitioners, policymakers, and citizens.

[Watch the videos!](#)



GRANULAR Participates in the 1st FIREPOCTEP+ Sustainability Workshop and Training Session on Financial Resources and Best Practices

On November 14 and 15, researchers Breixo Martins and María Isabel Doval Ruiz from the University of Vigo presented the GRANULAR project at the 1st FIREPOCTEP+ Sustainability Workshop and Training Session on Financial Resources and Best Practices. The event, organised by the Finnova Foundation as part of the INTERREG POCTEP FIREPOCTEP+ project, took place in San Xoán de Río, Ourense, Spain.

[Read more!](#)

EUROPEAN NEWS

Council approves key updates to modernise EU Statistical System and improve data access

On 5 November 2024, the Council adopted revisions to the EU legal framework for European statistics, modernising the European Statistical System to better meet contemporary data needs. This updated regulation will allow for sustained access to data held by businesses and public administrations, enabling the European Statistical System to harness digital data sources and advanced technologies. These updates aim to meet the increasing demand for more granular and timely statistics while reducing the reporting burden on stakeholders.

[Check it out!](#)



New EU Regulation enhances tracking of Environmental Contributions

In November, the EU Council formally adopted amendments to the regulation on European environmental economic accounts, marking a significant advancement in how environmental contributions to the economy are measured. The updated regulation introduces significant changes to optimise data collection and analysis processes as ecosystem accounts, forest accounts and environmental subsidies accounts.

[Read more!](#)

ELIF Webinar: Ensuring that the post 2027 EU policies are (really) smart and sustainable

On 25th November 2024, AEIDL, the European Association for Innovation in Local Development, hosted an edition of its European Local Innovation Forum (ELIF). This event focused on the future of EU policies aimed at promoting sustainability and smart local development, providing valuable insights ahead of the new EU Political Guidelines for 2024-2029. This webinar, organised in collaboration with the FUTURAL, RURACTIVE, SMART ERA, and BEATLES projects, is part of the Territorial Development Thematic Community.

[Check it out!](#)





‘Glocal’ opportunities for young people in rural and remote areas: Council approves conclusions

The Council is calling for greater support for young people living in rural and remote areas – in particular by improving access to ‘glocal’ opportunities in education and employment – as a way to combat demographic challenges in Europe. Rural communities are a core part of the EU’s identity and play a crucial role in sustainable development. However, significant disparities persist between rural and urban areas.

[Read more!](#)

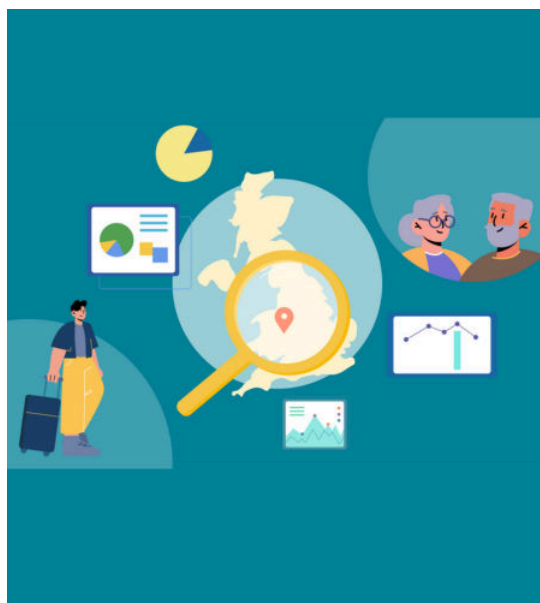
OTHER PROJECTS

What is TOOLS4CAP Academy?

What is TOOLS4CAP Academy?

The Tools4CAP project continues its mission of equipping managing authorities and governance bodies with suitable tools to enhance their skills in designing and performing monitoring tasks related to the CAP Strategic Plans. Recently, the Tools4CAP Academy, coordinated by AEIDL, organised two modules focused on data management and impact assessment models.

[Check the materials!](#)



Addressing Youth Outward-Migration and an Ageing Population in Monmouthshire

In Monmouthshire (Wales), the RUSTIK project is collecting data to help Monmouthshire County Council understand issues contributing to the region’s demographic challenge of youth outward-migration and an ageing population. Improving demographic balance is a key strategic objective for the Council and is central to ensuring Monmouthshire’s communities are economically and socially sustainable.

[Read more](#)

RURAL PACT



Policy Lab ‘Enhancing policy coordination for vibrant rural areas: Learning from experience to build a sustainable rural future’

The Rural Pact Support Office organised a Policy Action Lab to explore the best policy tools to ensure institutional, governance and integrated support for rural areas at all levels. It further discussed how to improve the availability of policy-relevant information on rural policy tools and funding streams, without increasing the administrative burden.

[Read more](#)

A conceptual framework for advancing Social Inclusion in rural areas

The SERIGO project has successfully developed an initial conceptual framework designed to explore how the Social and Solidarity Economy (SSE), driven by Social Innovation (SI), can foster social inclusion, enhance quality of life, and build resilience and sustainability in rural areas. Based on a comprehensive literature review, this framework sheds light on the challenges of vulnerability and social exclusion that rural communities frequently encounter.

[Check it out!](#)

EVENTS

[BEATLES Second EU Multi-Actor Working Group Workshop](#)

13 Jan 2025

Online

[Digital Ecosystems for sustainable digitalisation of farming](#)

6 Feb 2025

Online

[EU CAP Network Workshop on Farm Sustainability Data Network \(FSDN\)](#)

12 Feb 2025

L42 Business Center - Brussels, Belgium

[Good Practice Webinar on rural housing](#)

20 Feb 2025

Online

[Rural Pact Conference ‘From vision to action: Empowering rural areas for the future’](#)

8 Apr 2025



Funded by
the European Union



UK Research
and Innovation

Funded by the European Union. Views and opinions expressed are however those of the author(s) only and do not necessarily reflect those of the European Union or the European Research Executive Agency. Neither the European Union nor the granting authority can be held responsible for them. UK participants in the GRANULAR project are supported by UKRI- Grant numbers 10039965 (James Hutton Institute) and 10041831 (University of Southampton).

Copyright © 2023 GRANULAR | All rights reserved.

Our mailing address is:
aeidl@ruralgranular.eu

You are receiving this newsletter because you have subscribed to our mailing list or have participated in one of the GRANULAR events. Want to change how you receive these emails?

[Unsubscribe](#)

